

BUPRESTIS GIGANTEA.



CHARACTER GENERICUS.

Antennæ filiformes, ferratæ, longitudine thoracis.
Palpi quatuor, filiformes; articulo ultimo obtuso
truncato.

Caput dimidium intra thoracem retractum.

Lin. Syst. Nat. Gmel. p. 1926.

CHARACTER SPECIFICUS.

BUPRESTIS elytris fastigiatis, bidentatis, rugosis, thorace marginato lævi, corpore inaurato.

Lin. Syst. Nat. p. 659.

CERAMBYX INDIÆ orientalis maximus.

Grew. mus. 165. t. 13.

CANTHARIS maxima elytris cuprei coloris fulcatis.

Sloan. jam. 2. p. 210. t. 236. f. 1. 2.

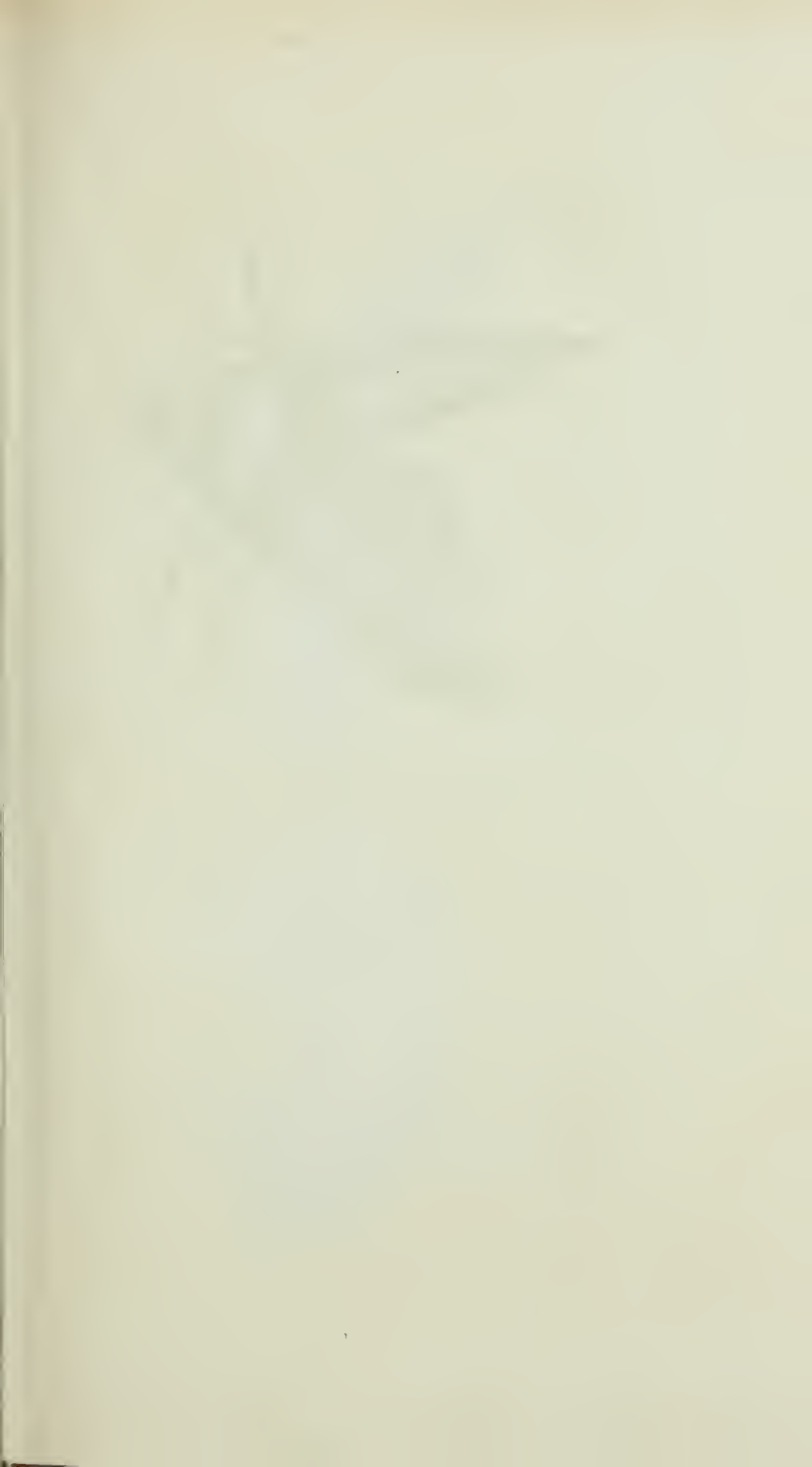
BUPRESTIS GIGANTEA.

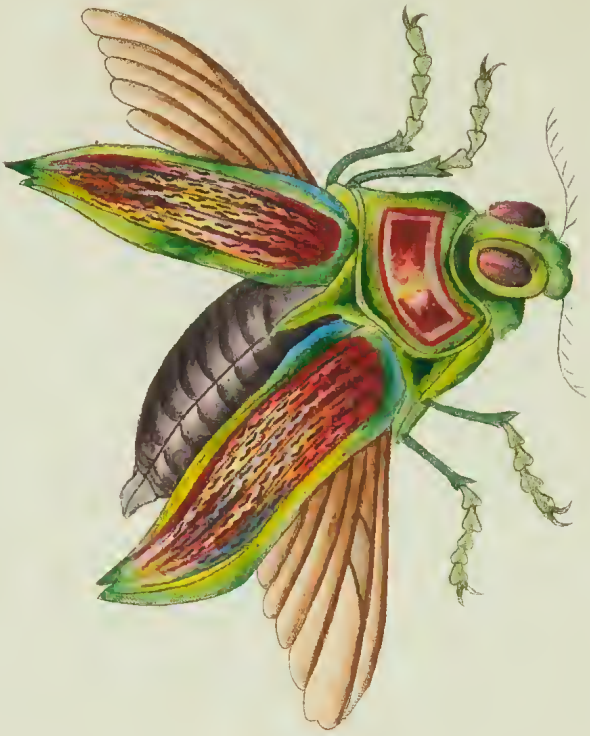
Degeer. inf. 4. p. 134. n. 1.

Buprestidis generi peculiaris est quidam et quasi metallicus splendor, qui in nonnullis speciebus, exoticis

ticis præcipue, adeo dominatur, ut aurum cuprumve summa arte politum æmuletur. Tinguntur quædam species colore aureo-viridi, cui cedit longe quicquid pigmenti est aut vernicis. Illam de qua jam agitur vincunt multæ fulgido colore, nullæ magnitudine; cumque larvam ejus notaverit et eleganter depinxerit Domina Merian, visum est ut melius explicetur genus, illam ipsam una cum insecto inspiciendam offerre. Larva ad magnitudinem qua depingitur crescere, et prope radices plantarum degere solet. Plene aucta dormit ad tempus cava sub humo, cutequæ exteriori exuta, in pupam seu chrysalidem mutatur, e qua, elapso quodam spatio, emergit insectum perfectum; cujus color generalis est quasi cupri politi, thoracis elytrorumque marginibus plus minus viridi tinctis. Elytrorum superficies est paulum scabrosa et rugosa, striis aliquot in longitudinem ductis quasi costata.

Notandum est antennas Buprestidis giganteæ non mere setaceas esse, ut plerisque ejusdem generis, sed lamellis paululum pectinari. Americam Australem incolit pulcherrimum hoc insectum.





THE
GREAT BUPRESTIS.



GENERIC CHARACTER.

Antennæ filiform, and sometimes ferrated; of the length of thorax.

Feelers or *Palpi* filiform: with the last joint obtuse or truncated.

Head partly retracted under the thorax.

SPECIFIC CHARACTER.

COPPER-COLOURED BUPRESTIS with a gloss of green-gold; the wing-shells wrinkled, and bidentated at the extremities.

The GREAT COPPER-COLOURED BUPRESTIS.

The GREAT GOGGLE-EYED BEETLE.

Grew's Museum Reg. Soc.

Merian Sur. pl. 50.

The genus *Buprestis* is remarkable for the metallic splendor by which most of the exotic species are distinguished; and which in some is so great as to equal the appearance of the most highly-polished gold

gold or copper : others are ornamented with a tinge of golden green, which far exceeds the appearance of all artificial painting or varnish. The present species, though less rich in colour than several others, is the largest of the whole genus ; and as its larva has been observed and well figured by Madam Merian, I have thought it not improper, as an elucidation of the genus, to add the larva as represented by that lady, to the figure of the complete insect. This larva grows to the size represented, and resides near the roots of plants : when fully grown, it lies dormant for some time in a small cavity beneath the surface of the ground, and, casting its exterior skin, becomes a pupa or chrysalis, out of which, after a certain space, proceeds the perfect insect. Its general colour is that of highly-polished copper ; the edges of the thorax and wing-cases tinged more or less with green. The wing-cases are of a roughish or wrinkled surface, and slightly ribbed longitudinally. It is to be also observed that the antennæ, which in most of the genus are simply setaceous, are in the present species of a somewhat lamellated or pectinated appearance. This beautiful insect is a native of South America.